

Innovation!

**Simplify your
anterior composite
restorations!**

new!
VeneerNow™
Injectable Matrix System



Fast, Predictable Results!

premier® Inspired solutions
for daily dentistry®

Premier® Dental Products Company • 888-670-6100 • premierdentalco.com

©2024 Premier Dental | All Rights Reserved

new!
VeneerNow™
Injectable Matrix System



Simplify your anterior composite restorations!

Elevate your dental practice and improve your workflows with the VeneerNow™ Injectable Matrix System – your solution for quickly creating chair-side attractive, natural-looking composite veneers and anterior restorations. Designed for ease of use, it enables composite injection with minimal clean-up.

VeneerNow also works with packable composite, offering versatility. This essential addition to your operatory toolkit makes anterior restorations fast with predictable results.

VeneerNow™ Fast, Predictable Results!



Full anatomical design
Replicates natural tooth shape for superior results



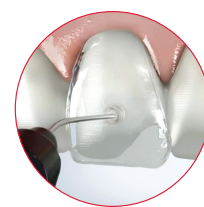
Side wings
Enhance stability & minimize interproximal clean-up



Closed system matrix
Provides a void-free smooth composite layer for easier finishing and polishing



Natural cervical line
For a precise anatomical emergence profile



Injection stalk for flowable composite
Provides easy injection for optimal placement



Versatile
Use with flowable or packable composite

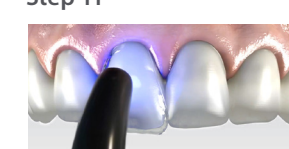
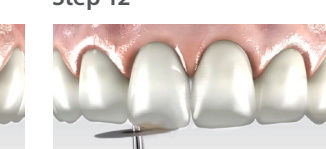
Full Procedure
Phase 1: Preparation

<p>Step 1</p>  <p>Initial Situation</p>	<p>Step 2</p>  <p>Minimal tooth preparation and decay removal (if needed)</p>	<p>Step 3</p>  <p>Apply acid etchant to the tooth for 15-60 seconds.</p>
<p>Step 4</p>  <p>Rinse with copious amounts of water</p>	<p>Step 5</p>  <p>Apply Bonding Agent. Gently blow off excess with an air syringe leaving a thin layer of material.</p>	<p>Step 6</p>  <p>Light cure according to the manufacturer's recommendations.</p>

Phase 2:
VeneerNow™

<p>Step 7</p>  <p>Choose the right size and shape of the VeneerNow™ matrix from the box.</p>	<p>Step 8</p>  <p>Apply the VeneerNow matrix on to the teeth to be treated.</p> <p>Pro tip: Create a lingual shell to secure the matrix and prevent overflow.</p>	<p>Step 9</p>  <p>Apply and connect the tip of the Injectable composite syringe into the VeneerNow matrix nozzle and inject until the whole template is filled with composite. Make sure it's free of air bubbles.</p>	<p>Step 10</p>  <p>Release the tip of the syringe from the nozzle.</p>
---	---	---	---

Phase 3: Finish

<p>Step 11</p>  <p>Light cure according to the manufacturer's recommendation, then remove the matrix.</p>	<p>Step 12</p>  <p>Finish and polish.</p>
---	---



new!
VeneerNow™
 Injectable Matrix System



Starter Kit



Ordering information

9069237 Starter Kit

Contains:

32 Small/Medium - SM Teeth 5-12, Palmer 4] - 4] (4 ea.)

16 Medium/Large - ML Teeth 5-12, Palmer 4] - 4] (2 ea.)

9069244 Mini Kit

Contains:

8 Small/Medium - SM Teeth 7-10, Palmer 2] - 2] (2 ea.)

4 Medium/Large - ML Teeth 7-10, Palmer 2] - 2] (1 ea.)

Refills:

Small/Medium - SM

Contains: 6 matrices

9069268	Tooth 5	Palmer 4]	FDI 14
9069275	Tooth 6	Palmer 3]	FDI 13
9069282	Tooth 7	Palmer 2]	FDI 12
9069299	Tooth 8	Palmer 1]	FDI 11
9069305	Tooth 9	Palmer 1]	FDI 21
9069312	Tooth 10	Palmer 2]	FDI 22
9069329	Tooth 11	Palmer 3]	FDI 23
9069336	Tooth 12	Palmer 4]	FDI 24

Refills:

Medium/Large - ML

Contains: 6 matrices

9069343	Tooth 5	Palmer 4]	FDI 14
9069350	Tooth 6	Palmer 3]	FDI 13
9069367	Tooth 7	Palmer 2]	FDI 12
9069374	Tooth 8	Palmer 1]	FDI 11
9069381	Tooth 9	Palmer 1]	FDI 21
9069398	Tooth 10	Palmer 2]	FDI 22
9069404	Tooth 11	Palmer 3]	FDI 23
9069411	Tooth 12	Palmer 4]	FDI 24



For additional video instruction by indications,
 visit premierdentalco.com/VeneerNow or scan QR code.

premier® Inspired solutions
 for daily dentistry®



Premier® Dental Products Company • 1710 Romano Drive, Plymouth Meeting, PA 19462, USA
 Phone 888-670-6100 • 610-239-6000 • Fax 610-239-6171 • premierdentalco.com • E-mail: info@premierdentalco.com

Lit# 8698802 0924013 Rev0 NKP5M