

Inspired Solutions from Premier®



Premier®

Award-winning Hygiene Product Suite

Innovation • Efficacy • Ergonomics • Safety

*No matter what your dental hygiene needs are,
Premier's got you covered!*

NEW ProFlare® Articulating Prophy Angle - See page 1 & 2
Enamel Pro® Prophy Paste - See page 13 & 14



ProFlare®

Articulating Disposable Prophy Angle



Innovation! Articulating cup design for a superior polish

The new ProFlare® articulating disposable prophy angle provides a better way to polish. Its unique latex-free articulating cup* pivots and flares adapting to the contour of each tooth surface with less wrist motion for better ergonomics, while its outer ridges reach interproximally. The efficient gear mechanism provides smooth acceleration and optimal jam-free performance. ProFlare offers you superior quality at an affordable price.



Articulating cup design!



Unique pivot & flare design*
 • Maximum surface adaptation
 • Latex-free
 *Patent pending



Contours to each tooth
 More efficient polishing



Less wrist motion
 Better ergonomics



Affordably priced
 Superior quality



**Innovative
Articulating Cup!**

Innovative articulating cup



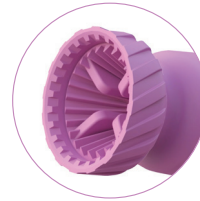
- Unique pivot & flare design***
- Maximum surface adaptation
 - Latex-free
- *Patent pending*



- Low profile**
- Flares & flexes easily
 - Cleans beneath gingival



- Contours to each tooth**
- More efficient polishing



- Outer ridges**
- Interproximal stain removal
 - Microgrooves & ribs for paste retention

Efficient gear mechanism



- Smooth acceleration**
- Eliminates chatter
- Jam-free**
- Optimal performance



- Compact head & neck**
- Improved vision & access

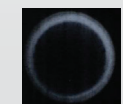
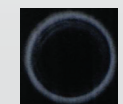
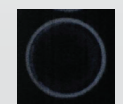
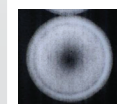
ProFlare® exhibits up to 10% greater flaring capacity

Resulting in better stain removal & polish*

Up to
← 10% →
greater flaring

Unique Cup Design

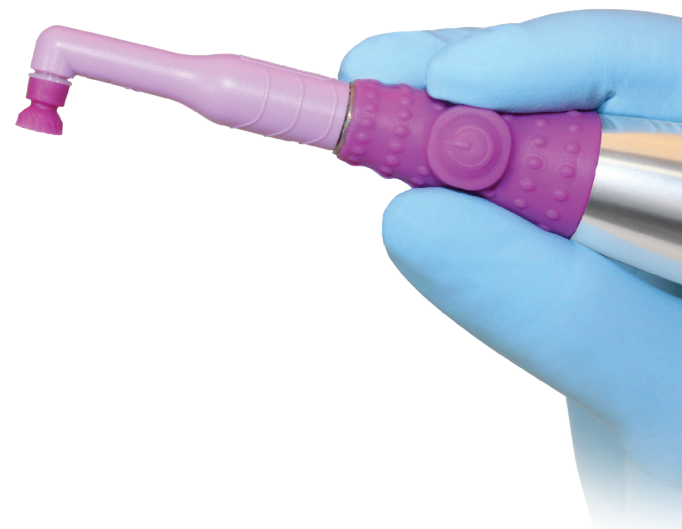
- ✓ Starts flaring with less pressure
- ✓ Picks up & retains paste without splatter
- ✓ Allows exerted pressure on paste; not cup's edge



Actual images taken at 150g of pressure.

*R. P. Christensen and V. W. Bangerter, Determination of RPM, Time, and Load Used in Oral Prophylaxis Polishing in Vivo; J Dent Res 63(12):1376-1382, December, 1984 / 0224042 Rev0

5500150 ProFlare® Disposable Prophy Angle
Bag of 125



AeroPro®

Cordless Prophy Handpiece

AeroPro® Performs Best!

Less Aerosol, Exceptional Ergonomics

AeroPro® just got even better. The enhanced quick-touch button provides better ergonomics and precise control to remove stains and polish your patients' teeth. Utilizing new sealing technology, AeroPro can be reprocessed safely and quickly with increased durability. AeroPro generates less aerosol, less splatter vs. other leading handpieces according to a University of California Irvine study*.

- ✓ **New!** Enhanced quick-touch button – better ergonomics, control & protection
- ✓ **New!** Sealing technology – increased durability for safe reprocessing
- ✓ Lightweight, 100% mobile design – promotes hand & wrist health
- ✓ Less aerosol & less splatter* – precise finger-tip speed control



- 5500510 AeroPro® Complete Package
(3) Autoclavable Outer Sheaths,
1 each: Motor Component, Charging Station,
AC Adapter, Stand, Box of 500 Disposable Barriers,
Accessories
- 5500500 AeroPro® Basic Kit
(1) Autoclavable Outer Sheath,
1 each: Motor Component, Charging Station,
AC Adapter, Stand, Box of 500 Disposable Barriers,
Accessories
- 5500520 AeroPro® Autoclavable Outer Sheath
- 5500530 AeroPro® Disposable Barriers - Box of 500



Accepts most disposable angles
Rotates 360° for improved intraoral access

New! Enhanced quick-touch button
Easily switch speeds

New! Sealing technology
Increased durability for safe reprocessing

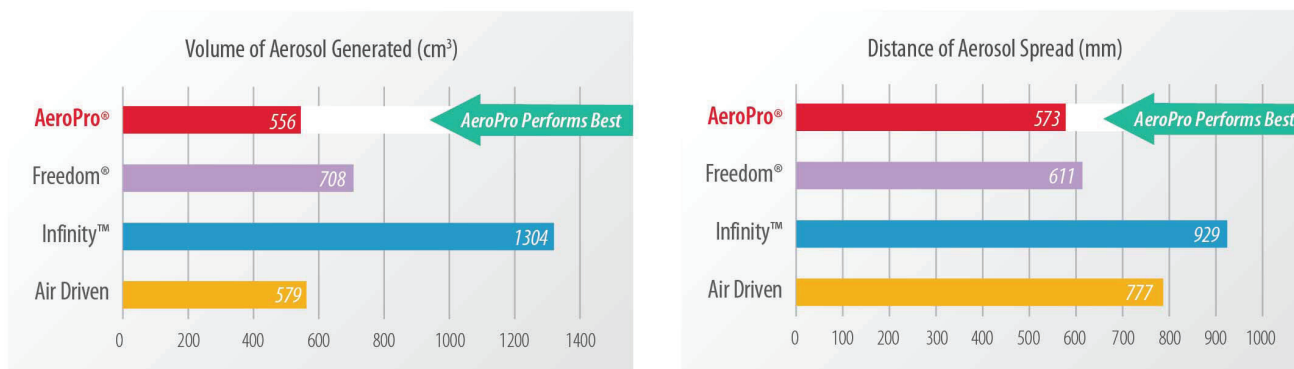
Dimpled silicone grip
Improves tactile feel while preventing slippage

Quiet and powerful German-made motor
Constant speed without extra pressure

ChargeSMART™ Battery Technology
Charges quickly and provides lasting power for all day use

*Based on a University of California Irvine study, 2021.

THE RESULTS ARE IN: AeroPro® generates less aerosol than the competition*



*Effect of Handpiece and Polishing Speed on Volume of Aerosol Generated and Distance of Aerosol Spread Using No Suction. Based on a University of California Irvine study, 2021. Data on file. / Freedom and Infinity are not trademarks of Premier. / 0521069



Enhanced Quick-touch Button



Lightweight, 100% Mobile Design

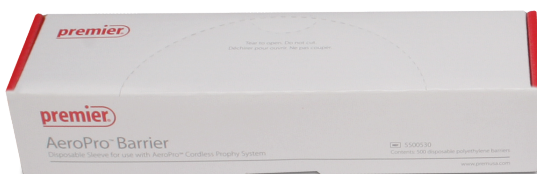


New Sealing Technology



Less Aerosol & Less Splatter

*With times like these, you need to go pro.
AeroPro – the right product for right now.*



AeroPro® Complete Package Shown

BioCoat®

Bioactive Resin Pit & Fissure Sealant

Bioactive Protection is Here!

Daily remineralization, Exceptional protection.

Award-winning BioCoat® with SmartCap® Technology is a true breakthrough. That's because BioCoat is the only bioactive resin pit and fissure sealant that delivers daily remineralization for long-term bioactive protection. This patented technology provides the benefits to strengthen tooth enamel and protect against acid attacks. BioCoat's filled formation delivers durability that resists cracking, chipping and fractures.

BioCoat® with SmartCap® Technology delivers:

- ✓ Relentless protection – *daily remineralization from extended release of fluoride, calcium & phosphate ions*
- ✓ Bioactive pit and fissure sealant - *strengthens enamel & helps provide defense against acid attacks*
- ✓ Opaque shade with fluorescence – *makes verifying placement & checking sealant integrity easier*
- ✓ Outstanding handling and adhesion – *easy application ensures sealed margins & excellent retention*





Figure A
Dye Penetration
Microleakage Study

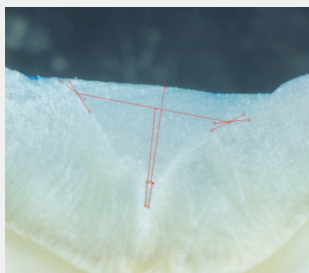
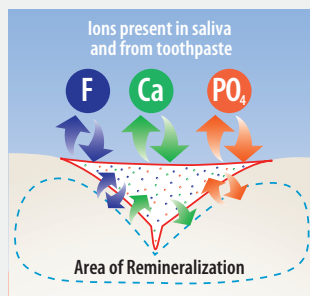


Image courtesy of Shalom Mehler, DMD

BioCoat's thixotropic properties allow for thorough penetration and adaptation into even the tiniest pits and fissures. No dye penetration indicates no microleakage.†

Figure B
Schematic of clinical situation
seen in Figure A



- Sealant
- Area of Remineralization
- SmartCap Microcapsules

See
page 33 for
Sleeve-It™
Barriers

- 3001530 BioCoat Standard Pack
Contains: One 1.2ml syringe and five disposable applicator tips
Shade: White
- 3001535 BioCoat Applicator Tips
Contains: 100 disposable applicator tips
- 3001531 BioCoat Value Pack
Contains: Four 1.2ml syringes and 20 disposable applicator tips
- 3001532 BioCoat Bulk Pack
Contains: Twenty 1.2ml syringes

BioCoat is **not** formulated with Bisphenol A (BPA).

No special technique is required to place BioCoat.



Clean pits and fissure thoroughly with pumice and a 2pro® disposable prophy angle. Rinse and dry.



Etch pit and fissures for 20 seconds using Spot-On™ Etch or Premier phosphoric acid etch.



Thoroughly rinse and dry – maintain a dry field.



Apply BioCoat to pit and fissures – light cure for 20 seconds.



And now, BioCoat fluoresces under black light to make verifying placement and checking sealant integrity easier.

Images courtesy of Shalom Mehler, DMD

† BioCoat Micrograph taken after Dye Penetration Microleakage Study (21 days at 37°C and then thermocycled for 2000 cycles)

Enamelon®

Preventive Treatment Gel

Be the Hero!

*Enamelon Delivers Everyday Relief for
Sensitivity & Dry Mouth Tissues + Protection*

Be the hero by building your practice and pleasing your patients. Next time patients complain of sensitivity or dry mouth, come to the rescue with Enamelon's 2-way Protection Power.

First, Enamelon's active ingredient, stannous fluoride, has been clinically proven to desensitize teeth and help prevent caries and gingivitis.¹ Then, with its patented amorphous calcium phosphate (ACP) technology¹, Enamelon actually helps strengthen tooth enamel as well. Unlike other treatment gels, Enamelon helps prevent caries by providing 3x greater protection against acid challenges compared to 5000ppm fluoride toothpastes.²

The non-abrasive gentle formula with Hydramulsion reduces symptoms of dry mouth through its long-lasting coating that soothes and lubricates tissues. Enamelon is your professionally-dispensed solution to give your patients the relief they want and the enamel protection they need. Every time.

More protection Less fluoride^{2,3}

Enamelon 2-Way Protection Power

- ✓ Stops sensitivity in its tracks
- ✓ Soothes & moisturizes tissues for dry mouth
- ✓ Provides 3x greater reduction of enamel solubility³
- ✓ Helps prevent caries and gingivitis with less fluoride (970 ppm F vs 5000 ppm F)
- ✓ Promotes remineralization and inhibits demineralization^{2,3}



Treats sensitivity

Occludes tubules with ACP & Fluoride

Dentinal hypersensitivity is under-reported by the patient.⁴ Enamelon Treatment Gel is your professionally dispensed solution.

Enamelon® contains stannous fluoride along with calcium and phosphate ions that have proven effective for tubule occlusion. By blocking the exposed tubules with a combination of stannous (tin) ions along with fluoride, calcium and phosphate salts, a physical barrier is created that covers open dentinal tubules to prevent external stimuli from causing pain or discomfort.

Soothes dry mouth tissue

Enamelon provides an immediate and long lasting soothing, moisturizing and lubricating effect.

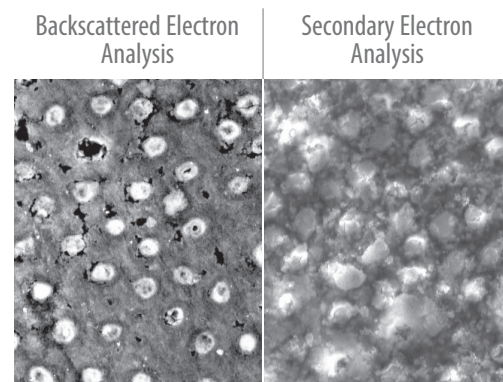
Through the use of proprietary co-polymers, Hydramulsion™ benefits your patients by providing a long-lasting coating that lubricates and soothes the soft tissues of the mouth.

Enamelon is the only stannous fluoride preventive treatment gel that has been shown in a clinical trial to help reduce many sensory symptoms of dry mouth.⁵



All patients can benefit from Enamelon

Enamelon®	Anti-Caries	Anti-Sensitivity	Anti-Gingivitis
Attrition (Bruxism)		✓	
Caries Risk based on CRA ⁶	✓		
Crown & Bridge Protection	✓	✓	✓
Dental Erosion	✓	✓	
Gastric Reflux Disease GER/GERD	✓	✓	
History of ECC ⁷	✓		
History of Pit & Fissure Caries	✓		
ICDAS Prevention Care ⁸	✓		
Oncology	✓	✓	✓
Orthodontic	✓		✓
Pediatric	✓		✓
Periodontal	✓	✓	✓
Polypharmacy	✓	✓	
Pregnancy/Maternity	✓		✓
Recession	✓	✓	✓
Special Needs Patients	✓	✓	✓
Whitening/Bleaching		✓	
Xerostomia/Dry Mouth	✓	✓	✓



SEM of the occluded dentinal tubules after day 5 (10 applications) with Enamelon.
10 μm Mag = 1.00 K, XEHT = 20.00 kV



Dispense with confidence!

“ For patients that have tried a sensitive toothpaste and have not had any relief, we offer the Enamelon Treatment Gel for the generalized sensitivity. For our dry mouth patients, we offer the Enamelon to help aid in the relief to dry mouth tissues, as well as protect them from caries. ”

- Dr. P., DMD & C. B., RDH, BS, Connecticut

9007285 Enamelon® Preventive Treatment Gel
4.0 oz (113 g), Clean Mint, 12/case

Not available in Canada.

1. Enamelon's patented formula contains 0.45% stannous fluoride and amorphous calcium phosphate (ACP) / 2. Schemehorn BR, DiMarino JC, Movahed N. Comparison of the incipient lesion enamel fluoride uptake from various prescription and OTC fluoride toothpastes and gels. J Clin Dent. 2014;25:57-60. / 3. Schemehorn BR, DiMarino JC, Movahed N. Comparison of the Enamel Solubility Reduction from Various Prescription and OTC Fluoride Toothpastes and Gels. Journal of Clinical Dentistry, 2014; 25:61-64. / 4. Kamath Deepa G & Nayak Sangeeta U. Dentinal hypersensitivity and its management – An informed view, J. Pharm Biomed Sci. 2013, February; 27 (27): 474-479. (Article no 09) / 5. Milleman J.L., Milleman K.R., Santos S.L., Proskin H.M., Battershell K.K., DiMarino J.C.A. Subjective Assessment of Enamelon® Preventive Treatment Gel in A Self-reported Dry-mouth Population. Compend Contin Educ Dent. 2016; 37 (8): E6-E10. / 6. CRA=Caries Risk Assessment curriculum. (ADA, AAPD, CAMBRA, etc) / 7. Early Childhood Caries is defined as the presence of one or more decayed (non-cavitated or cavitated lesions), missing (due to caries) or filled tooth surfaces in any primary tooth in a preschool-age child between birth and 71 months of age. The term "Severe Early Childhood Caries" refers to "atypical" or "progressive" or "acute" or "rampant" patterns of dental caries. – ADA Statement on Early Childhood Caries. www.ada.org/2057.aspx / 8. ICDAS (International Caries Detection and Assessment System) is detection and assessment system classifying states of the caries process. www.icdas.org

The Remineralizing Technology of Amorphous Calcium Phosphate

Amorphous Calcium Phosphate (ACP) - Building blocks of tooth mineral^{12,13,14,15}

The most reactive and soluble calcium phosphate compound, ACP forms on the tooth enamel, within the dentinal tubules and provides a calcium and phosphate reservoir. Research shows that available ACP on the enamel can prevent damaging erosion by stimulating remineralization of tooth structure.^{16,17,18} Introducing calcium and phosphate back into the surface of the tooth with products containing ACP technology is an ideal strategy to reverse the demineralization process.

The ACP-forming ingredients also strengthen teeth by acting as an enhanced fluoride delivery system to deliver more fluoride than products without ACP.¹⁹ The patient has the benefit of fluoride uptake without greater exposure to higher fluoride concentrations or volumes. ACP combines with fluoride to desensitize dentin. Fluoride, along with ACP, occludes tubules by depositing tooth-like minerals to create a semi-permanent reduction in



hydraulic conductance. This is a proven mechanism to reduce dentinal hypersensitivity.

Value of Fluoride Sources

Fluoride reacts with tooth mineral, forming either fluoridated apatite (firmly-bound) or calcium fluoride (loosely-bound).

Firmly-bound fluoride, incorporated onto the surface of the crystals of apatite, can reduce the solubility of tooth mineral and hence inhibit demineralization due to acids generated by plaque bacteria.¹⁶

Loosely-bound (labile F) fluoride provides a relatively slow-release form of ionic fluoride to plaque and saliva.¹⁷ There has been renewed interest in loosely-bound fluoride as a reaction product of fluoridation to act as a potential "reservoir" source of solution fluoride enhancing remineralization and retarding demineralization processes.¹⁷

9. OTC Fluoride Monograph (21CFR Parts 310,355, and 369) and Antigingivitis/Antiplaque Tentative Monograph (21 CFR Part 356). / 10,11. Data on file. / 12. Tung, M.S., Eichmiller, F.C., Paffenberger Research Center. ADAHF. NIST. Gaithersburg, MD. "Dental Applications of Amorphous Calcium Phosphates" Journal of Clinical Dentistry, Vol.10, Issue 1, 1999. / 13. Tung, M.S., Eichmiller, F.C. "ACP for Tooth Mineralization", Compendium Cont. Educ Dent, Vol 25, No. 9, Suppl. 1, Sept. 2004, p 9-13. Journal Code 9600713, Journal Subset MEDJSD, ISSN 1548-8578. Corp. Author: American Dental Association Foundation. / 14. Tung, M., Eichmiller, F., Gibson, H., Ly, A., Skrtic, D., Schumacher, G., (ADAHF Paffenberger Research Center, NIST, Gaithersburg, MD), "Dentin Desensitization by in situ Formation of Calcium Phosphate", J. Dent Res 76 (IADR Abstracts):2985, 1997 / 15. Tung, M.S., O'Farrell, T.J., Liu, D.W., Paffenberger Research Center. ADAHF. NIST. Gaithersburg, MD. "Remineralization by Amorphous Calcium Phosphate Compounds" Journal of Dental Research, Vol. 72, Abstract No. 1738, 1993. / 16. Schemehorn, B.R., Wood, G.D., McHale, W., Winston, A.E., "Comparison of Fluoride Uptake into Tooth Enamel from Two Fluoride Varnishes Containing Different Calcium Phosphate Sources", J Clin Dent, 2011;22:51-54. / 17. White, D.J and Nancollas, G.H. "Physical and Chemical Considerations of the role of firmly and loosely bound fluoride in caries prevention", J Dent Res., 1990, 69:587-594. / 18. Tung, M.S., O'Farrell, T.J., Liu, D.W., Paffenberger Research Center. ADAHF. NIST. Gaithersburg, MD. "Remineralization by Amorphous Calcium Phosphate Compounds" Journal of Dental Research, Vol. 72, Abstract No. 1738, 1993 / 19. Source: "Final Report: Enamel Fluoride Uptake Study #08-151, Modified FDA Method #40V", Dental Products Testing, Therametric Technologies, Inc., Indiana University Emerging Technologies Center, March 2008 / 20. Effect of Calcium Phosphate Containing Fluoride Varnish of Dentin Permeability", Tung, M.S., Torres, J., (ADAHF Paffenberger Research Center, NIST, Gaithersburg, MD and U.S. Navy Dental Corps, Bethesda MD), J Dent Res (Spec Iss A): 0985, 2008 (www.dentalresearch.org). / 21. Fluoride Release from Fluoride Varnishes is Affected by Incubation Conditions C. Gonzalez-Cabezas, S.E.Flannagan, R. Krell, M. Uekihara, and C.C. Niquette, Dent Res 91(Spec Iss A):1094, 2012 (www.dentalresearch.org). / *Colgate and Duraphat are not registered trademarks of Premier Dental Products Company. / ™3M and Vanish are not trademarks of Premier Dental Products Company. / 22. Winston, A.E., Charig, A., Patel, V., McHale, W.A. and Malerman, R. "Effect of Prophylaxis Pastes on Surface of Tooth Enamel", Journal of Dental Research, Vol. 84, Special Issue A, IADR Abstracts, 2005. / 23. A Dental Products Testing study on fluoride shows that Enamel Pro provides 31% greater fluoride uptake into the enamel than pastes without ACP. / 24,25. Data on file.



Enamelon®

Fluoride Toothpaste

You can count on Enamelon to:



Still suffering from sensitive teeth? What about dry mouth? Let game-changing Enamelon® come to the rescue!

Did you know that your teeth are exposed to acidic, low pH foods and liquids that demineralize your tooth enamel every day?

Enamelon is the ONLY toothpaste specifically formulated with 2-way protection power to fight back. That's because Stannous Fluoride + a patented remineralizing technology with the components of Amorphous Calcium Phosphate (ACP) help strengthen tooth enamel and are clinically proven to desensitize teeth.¹

What's more, Enamelon's proprietary formula provides double the fluoride uptake of prescription 5,000 ppm fluoride toothpastes⁹ – to harden your tooth enamel. Unlike other brands, Enamelon actually helps seal the tooth surface to prevent sensitivity in the first place!

Enamelon's unique ingredients are also clinically proven to provide relief for dry mouth symptoms.¹⁰ Its Hydramulsion™ long-lasting coating soothes, moisturizes and lubricates dry mouth tissues.¹¹

- ✓ Stop sensitivity in its tracks
- ✓ Strengthen tooth enamel³
- ✓ Soothe and moisturize discomfort associated with dry mouth tissues
- ✓ Help prevent gingivitis & cavities
- ✓ Promote remineralization and inhibits demineralization^{2,3}
- ✓ Provide peace of mind with no SLS, gluten or dyes

9007280 Enamelon® Toothpaste
4.3 oz (122 g)
Mint Breeze, 12/case

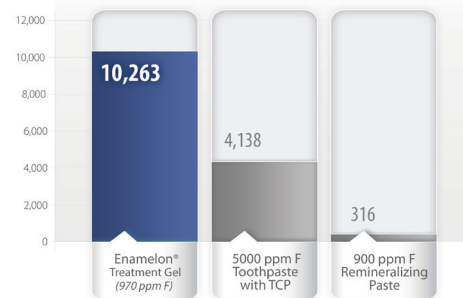
Not available in Canada.



		Enamelon® Preventive Treatment Gel	5000 ppm F Toothpaste with TCP	900 ppm F Remineralizing Paste
ppm Fluoride		970	5000	900
Claims	Anticaries	✓	✓ ¹	
	Sensitivity Relief	✓		✓
	Antigingivitis	✓		
Features/Benefits	Stimulates Saliva	✓		
	Moisturizes & Soothes Soft Tissue	✓		
	Abrasive-free Formula	✓		✓
	ACP Formula	✓		
Value	SLS-free	✓		✓
	Price ¹	\$12.99/4 oz	\$12.99/4 oz	\$15.89/1.41 oz
Cost/Ounce		\$3.25	\$3.25	\$11.26

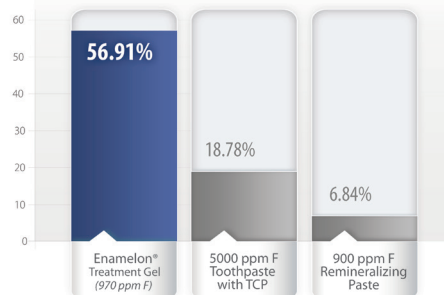
More protection with less fluoride

Enamel Fluoride Uptake (ppm F) FDA Method #40¹



3x greater reduction of enamel solubility

Enamel Solubility Reduction FDA Method #33^{1,2}

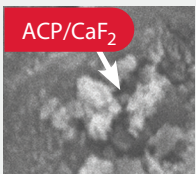


Enamel Pro® Varnish

5% Sodium Fluoride Varnish

The only Varnish with ACP* technology

A powerful tool against hypersensitivity! Enamel Pro® varnish with ACP technology (amorphous calcium phosphate) administers more desensitizing efficiency and greater enamel protection to your patients. Uniquely formulated to diminish hydraulic conductance by 73%, Enamel Pro delivers 4X the fluoride uptake compared to other varnishes into the enamel surface; sub-surface; and dentin tubules to reduce thermal and post-operative hypersensitivity quickly.^{16,21} The available calcium and phosphate ions delivered by ACP technology, protect and repair the tooth's surface²⁰ Enamel Pro's thin layer application and appealing flavors ensure increased patient acceptance.



Amorphous calcium phosphate and calcium-fluoride mineral on dentin surface and in tubules

Indications for Use

Enamel Pro® Varnish is a fluoride containing preparation for the treatment of dentinal hypersensitivity, and for the reduction of post operative sensitivity.

5% NaF Varnish

Box of 35

- 9007540 Strawberries 'n Cream 0.40ml
- 9007541 Bubblegum 0.40ml
- 9007547 VanillaMint 0.40ml
- 9007542 Bubblegum 0.25ml

Box of 200

- 9007543 Strawberries 'n Cream 0.40ml
- 9007544 Bubblegum 0.40ml
- 9007545 VanillaMint 0.40ml

Each box contains single-unit doses and an applicator brush, post-application patient care instructions and doctor's directions for use.

VanillaMint is not available in Canada.





Enamel Pro Varnish is easy to apply and aesthetically pleasing.



[View Easy Application Video](#)

www.youtube.com/PremierDentalProduct

Indications for Use

Enamel Pro® Varnish is a fluoride-containing preparation for the treatment of dentinal hypersensitivity and for the reduction of post-operative sensitivity.

Easy Application

- ✓ Peel off foil top, stir varnish with applicator brush, mix thoroughly
- ✓ Apply thin coat of varnish across tooth surfaces
- ✓ Sets on contact with saliva

ACP ions + fluoride provide:



4X more fluoride uptake into enamel than other varnishes^{16,21}



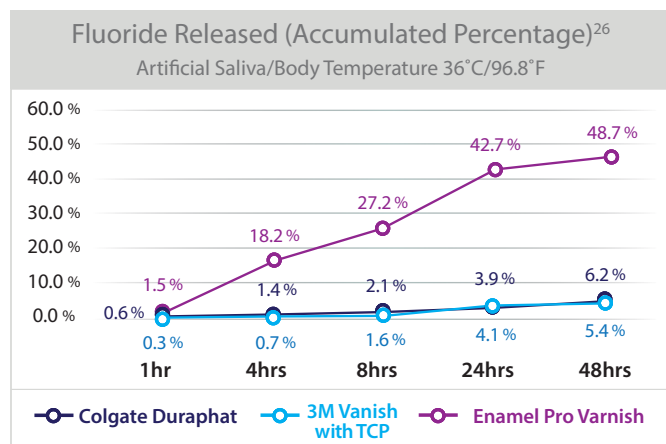
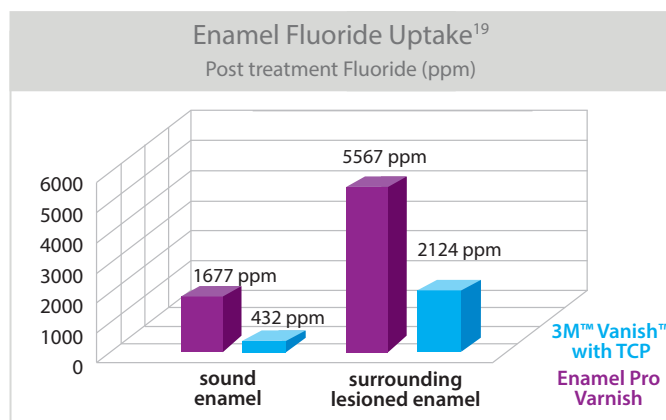
Reduces hydraulic conductance by 73%²⁰



Protects & repairs tooth surface²⁰



Thin layer application & appealing flavors ensure patient acceptance



In a study evaluating incubation conditions on fluoride release in vitro, Enamel Pro Varnish displayed greater fluoride release than both 3M Vanish and Colgate® Duraphat®.²¹

Enamel Pro®

Prophy Paste

Get Dual Action Power with Enamel Pro

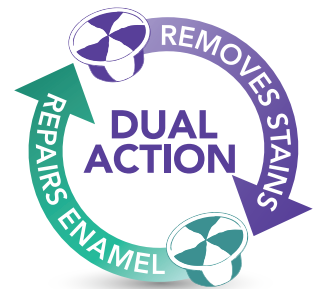
*Removes stains & repairs enamel*²³

Enamel Pro with Dual Action Power is different. It's the only prophy paste that effectively removes stains and repairs enamel. With its unique formulation with ACP (amorphous calcium phosphate) technology, Enamel Pro delivers 31% more fluoride uptake to help repair the tooth surface²⁷ for brighter, whiter smiles.



Dual Action Power = Effective Stain Removal + Enamel Repair²⁷ powered by ACP Technology

- ✓ Effective stain removal – *superior polish for brighter, whiter, more lustrous smiles*^{24,25}
- ✓ Delivers amorphous calcium phosphate (ACP) – *helps repair enamel through fluoride uptake*
- ✓ Minimizes splatter & easy to rinse – *safely leaves teeth clean & smooth*
- ✓ Fun swirls & great flavors – *for happy patients*



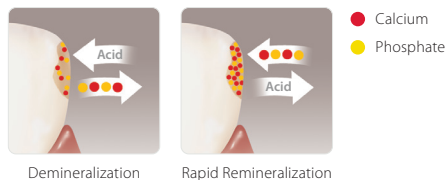
	Fine	Medium	Coarse
Mint**	9007600	9007601	9007602
VanillaMint	9007617	9007618	9007619
Bubblegum	9007614	9007615	9007616
Cinnamon	9007604	9007605	9007606
Strawberry	9007607	9007608	9007609
Mixed Berry	9007630	9007627	9007631
Grape	9007610	9007611	9007612
RaspberryMint	9007620	9007621	9007622
Mint (no fluoride)			9007613

**Also available in Mint Extra Coarse 9007603

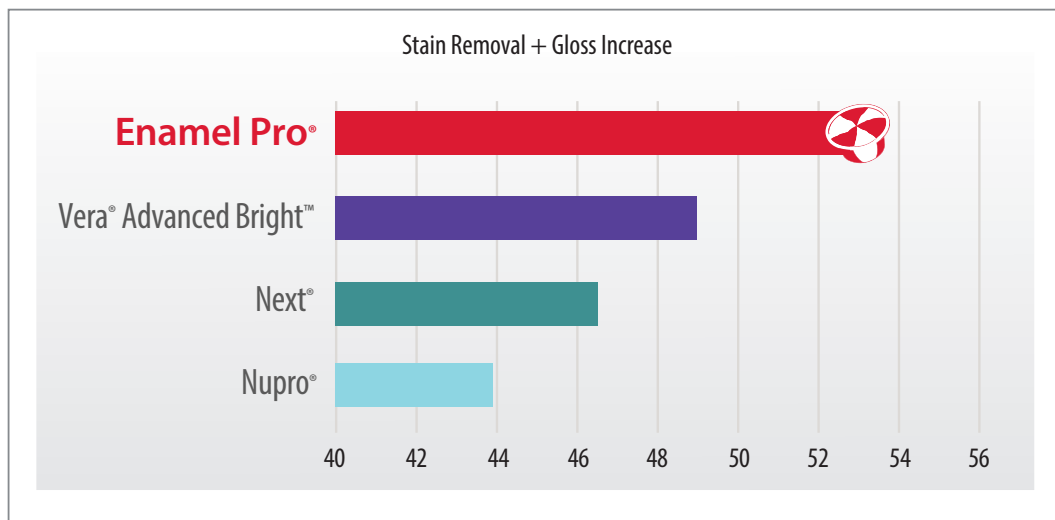


Each box of Enamel Pro® contains 200 single-use cups, packaged in a foil bag and a Comfy-Grip™ prophy cup holder.

9007650 Comfy-grip™ cup holder (3)



THE RESULTS ARE IN: Enamel Pro® outshines the competition.

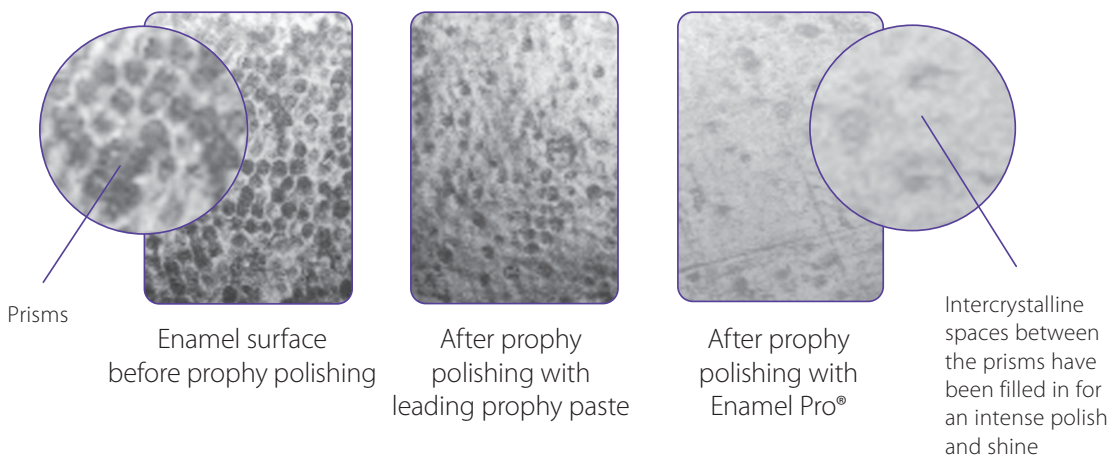


Testing conducted by Therametric Technologies, Inc., an independent, 3rd-party lab based in Noblesville, IN. Each bar represents the change in teeth color (due to stain removal as measured by ΔE) and change in gloss (due to change in surface luster resulting from polishing). The results are shown as absolute values (not normalized). *Vera® is a registered trademark and Advanced Brite™ is a trademark of Young Dental Manufacturing, LLC, Next® is a registered trademark of Preventive Technologies, Inc., Nupro® is a registered trademark of Dentsply Sirona, Inc.



Greater luster for whiter, brighter teeth^{15,22}

Zygo® non-contact profilometry intensity map profiles



Glitter®

Prophy Paste

Glitter® prophyllaxis paste delivers effective stain removal at a fair price. Its smooth, pliable and splatter-free paste cleans teeth quickly and effectively. Best of all, Glitter leaves your patients with the great, clean smiles they desire.

Professional polishing – Exceptional Value!

- ✓ Delivers effective stain removal – *for a whiter smile*
- ✓ Cleans teeth quickly and effectively – *easy to rinse off*
- ✓ Smooth, pliable and splatter-free – *great for you and your patients*

	Fine	Medium	Coarse
Mint**	9007400	9007402	9007404
Cherry		9007412	9007414
Strawberry	9007420	9007422	9007424
Bubble Gum	9007430	9007432	
Mint (no fluoride)		9007442	9007440

**Also available in Mint Extra Coarse 9007406



Tastytooth®

5% Sodium Fluoride Varnish

New & Improved!

Put a smile on your patient's face

New and improved Tastytooth® 5% Sodium Fluoride Varnish will put a smile on your patient's face. Create a satisfying experience with our high-impact flavors, featuring a blend of xylitol and sucralose. Our silky-smooth formula is easy to apply, affordably designed and gluten-free.



- ✓ Enhanced flowability – *smoother application to all areas*
- ✓ Better consistency – *easy to cover occlusal surfaces evenly*
- ✓ Better visualization – *reduces treatment time & nice aesthetics*
- ✓ New single-touch brush dispenser
– *single unit release, avoids cross contamination*
- ✓ New flavors – *patient pleasing Mint, Bubblegum and Blue Raspberry*

Contents: 100 (0.5mL) single-dose, 100 brushes with dispenser and Directions for Use.

9007590 **new!** Mint
9007591 **new!** Blue Raspberry
9007592 **new!** Bubblegum

Post-treatment patient care instructions are available for download at premierdentalco.com

Not available in Canada.



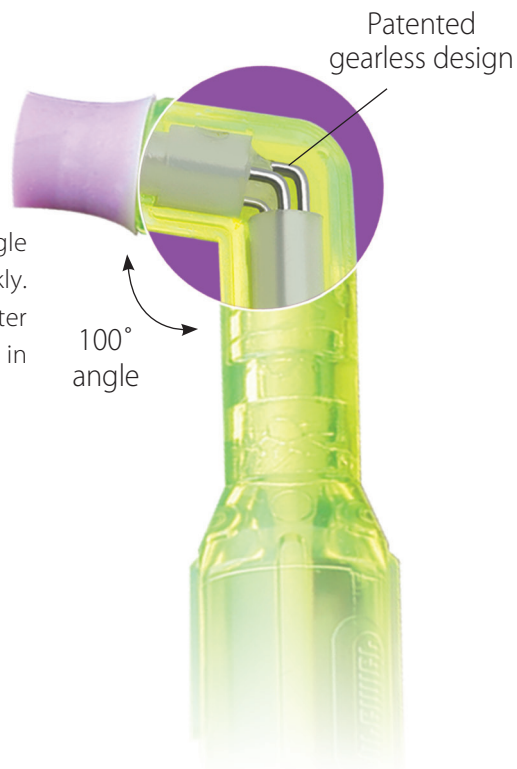
2pro[®]

Total Access Disposable Propphy Angle

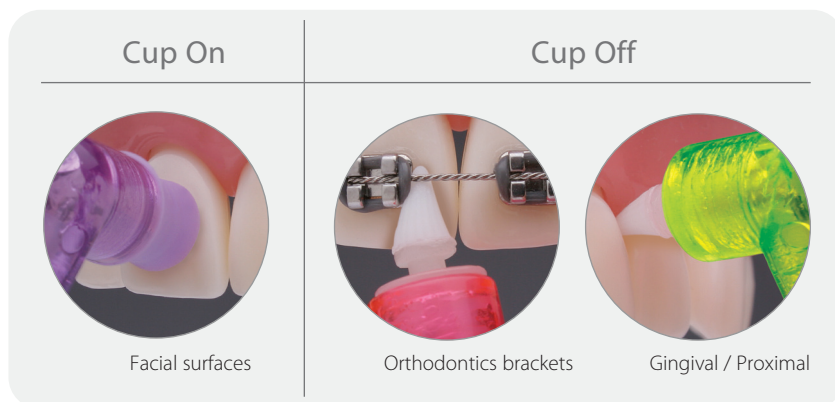
Twice the efficiency.
Get a 2-fer with 2pro!

Award-winning 2pro is the uber-efficient 2-in-1 disposable propphy angle that helps you easily access hard-to-reach areas of the mouth quickly. One cup. One tip. No extra cost or time to switch. Which means a better cleaning experience, happier patients and less chair time! 2pro is your all in one polishing angle.

- ✓ Patented gearless, jam-free design – *quiet, smooth polishing*
- ✓ Angled neck for easier total access – *makes hard-to-clean areas a breeze*
- ✓ Advanced 2-in-1 design – *saves time, improves workflow*
- ✓ Convenient access tip – *efficiently cleans around ortho bracket*



	Bag of 144	Bulk Package (1,000 angles)
Soft/Short Cup (purple cup)	5500101	5510001
Firm/Short Cup (blue cup)	5500102	5510002
Soft/Long Cup (white cup)	5500103	5510003
Firm/Long Cup (green cup)	5500104	5510004



Order through your authorized dealer.



Perfecta® REV!®

14% Hydrogen Peroxide

Zero to White in 15 minutes

Perfecta REV!® is a breakthrough in take-home tooth whitening! Help your patients get an affordable, professional strength, high-percentage H₂O₂ gel that whitens teeth with just 15 minutes of daily wear time. REV!'s patented water-based gel hydrates as it whitens so no need to worry about sensitivity or time-consuming 'solutions' that often leave non-compliant patients with disappointing results. And Perfecta REV!'s fresh mint rinse with Vitamin C boosts the whitening effect even more—without gimmicks like light or heat.

✓ Powerful Whitening Gel

- 14% Hydrogen Peroxide – *55% higher concentration than the leading brand*
- 15-minute daily wear time – *Just half the time of other take-home systems*
- Patented gel hydrates teeth as it whitens - *66% less sensitivity than the leading strips*^{26,27}

✓ Refreshing Finishing Rinse

- Provides boost to whitening effect – *activates residual hydrogen peroxide ions*
- Formulated with vitamin C – *promotes healthy gums after treatment*
- Clean & fresh cool mint feeling – *patients love it!*

4000142 REV! Patient Paks

Contains: 2 - 3cc syringes, 2 dispensing tips and finishing rinse, patient and doctor's instructions. Enough material for a two-week treatment.

Available individually through dealer. Not available in Canada.

26. Clinical Evaluation of Bleaching Efficacy of Two Different Systems, Sheila Koh, D.D.S., F.A.G.D. University of Texas Health Science Center at Houston - Dental Branch, December 2004. / 27. Crest® Whitestrips® Supreme



Perfecta® Bravó®

9% Hydrogen Peroxide

Only 30 minutes, once a day!

Patented water-based formulation hydrates teeth as they whiten to avoid sensitivity.

4000094 Bravó 50 Pak

Contains: 50 - 3cc syringes with dispensing tips, 12 patient instructions and doctor's instructions.

Not available in Canada.



Perfecta®

Carbamide Peroxide

Perfecta® carbamide peroxide gels are formulated with a predominantly glycol base for minimal dehydration and sensitivity.

Perfecta 16%

Can remove a full range of stains including those resulting from tobacco, dark beverages and even tetracycline. Wear time can be adjusted for light stains and for those patients with a history of thermal sensitivity.

	16%	Unflavored	Mint
Perfecta 50 Pak			
Contains 50 - 3cc syringes with dispensing tips, 8 patient instructions, 25 prescription bags, doctor's instructions.	16%	4004160	4004165
	21%	4004210	4004215
Accessories			
	4008311	Tray Cases (24 Pearl White)	
	4008305	.040" Tray Material, 5 x 5" (25)	
	4008300	Perfecta Block-Out Resin	

	4007165	16% Standard Tube	(Mint)
Standard Tubes 2-arch supply per tube			
A tremendous value with 2 ounces (59cc) of whitening gel in a squeeze tube. Ideal for long-term cases (tetracycline).	4007215	21% Standard Tube	(Mint)

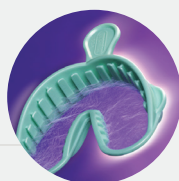
Not available in Canada.

ALFA™ Triple Tray®

Full-arch Alginate Impression Making

Ideal for whitening trays - one step, two impressions!

Box of 24	Small	1006313	Large	1006333
	Medium	1006323	Assorted	1006343



ComfortView® Lip & Cheek Retractor

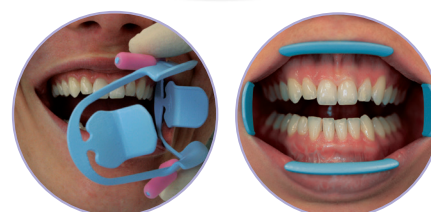
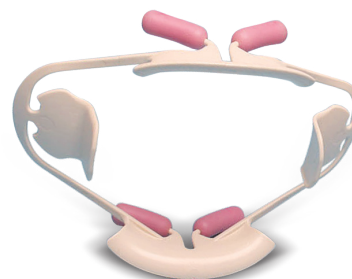
- ✓ Retracts lips and cheeks for optimal buccal and gingival access
- ✓ Maximum visibility and patient comfort
- ✓ Suitable for use in diagnostic, preventative, therapeutic dental applications, in-office whitening, digital impression scanning and intra-oral photography
- ✓ Autoclavable, latex free

9061381	Universal ComfortView Lip and Cheek Retractor - 2 per box (white)
9061383	Small ComfortView Lip and Cheek Retractor - 2 per box (blue)
9061382	ComfortView Refill Cushions -10 per pack



Perfecta 21%

Tetracycline stains, fluorosis. Dispense only to compliant patients with no history of thermal sensitivity.



PremierAir®

PremierAir® & Big Easy® Ultralite™ Scalars and Curettes

Now... Even Better Handles, Better Tips, Better Value!

Feel the Difference. Experience the Quality.

- ✓ Ergonomic, lightweight, tactile resin handles - *less hand & wrist fatigue*
- ✓ Heat-treated, cryo-hardened edges stay sharp longer - *helps remove calculus easily*
- ✓ And speaking of sharp, we've sharpened our pencils - *priced at an exceptional value!*



View the complete line of
instruments at premierdentalco.com

Sickle



Big Easy®
Ultralite™ (BEUL)
1/2" diam., 16g



PremierAir®
Scalers & Curettes
15g



Big Easy®
Ultralite™ (BEUL)
1/2" diam., 16g



PremierAir®
Scalers & Curettes
1/2" diam., 15g

204 Series



204 S • BEUL-05623 • PremierAir-1004696



Jacquette 34-35 • BEUL-05645 • PremierAir-1004686



H-204 S • BEUL-05625 • PremierAir-1004687



H-204 SD DISTAL • BEUL-05627 • PremierAir-1004697

Columbia



Columbia 13/14 • BEUL-05617 • PremierAir-1004652



Columbia 4L/4R • BEUL-05615 • PremierAir-1004651

Younger-Good



H Younger-Good 7/8 • BEUL-05693

McCall



Barnhart



Big Easy®
Ultralite™ (BEUL)
1/2" diam., 16g



PremierAir®
Scalers & Curettes
15g

Gracey	BEUL PS	BEUL MPS
1/2	05660	05670
3/4	05661	—
5/6	05662	05672
7/8	—	05673
9/10	—	—
11/12	05665	05675
11/14	—	—
12/13	—	—
13/14	05666	05676
15/16	05667	05677
17/18	—	—

Gracey Variations Big Easy Ultralite

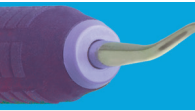
Pocket Scalers (PS) and Mini Pocket Scalers (MPS) have a slender and longer terminal shank to provide access into deeper pockets. MPS has the same slender tip design as PS, but with half the blade length.



BEUL PS

BEUL MPS

Gracey



**Big Easy®
Ultralite™ (BEUL)**
1/2" diam., 16g



PremierAir®
Scalers & Curettes
1/2" diam., 15g



Gracey 1/2 • BEUL-05601 • PremierAir-1004660
Short shank for incisors and cuspids



Gracey 3/4 • BEUL-05603 • PremierAir-1004661
Short contra-angle shank for incisors and cuspids



Gracey 5/6 • BEUL-05605 • PremierAir-1004662
Medium shank for cuspids and molars



Gracey 7/8 • BEUL-05607 • PremierAir-1004663
Medium contra-angle shank for bicuspid and molars, buccal and lingual surfaces



Gracey 9/10 • BEUL-05609
Long contra-angled for molars with more acute blade angle



Gracey 11/12 • BEUL-05611 • PremierAir-1004665
Triple angulation for easy access to buccal/mesial and lingual/mesial surfaces of premolars and molars



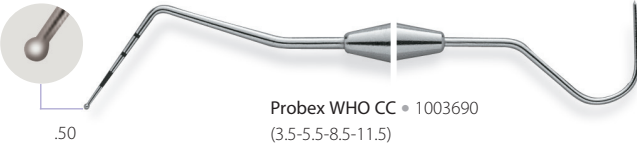
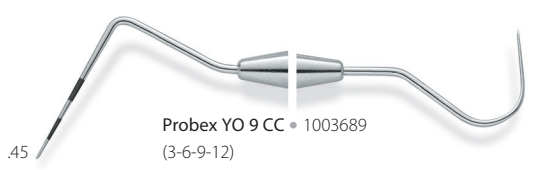
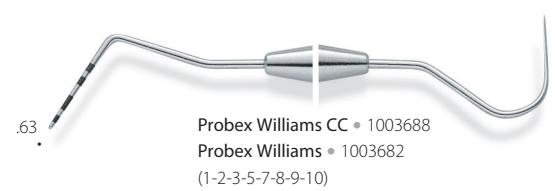
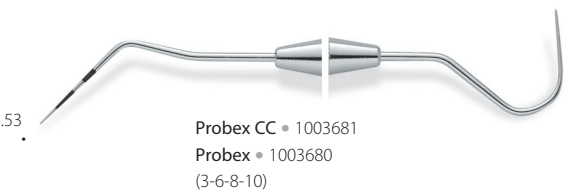
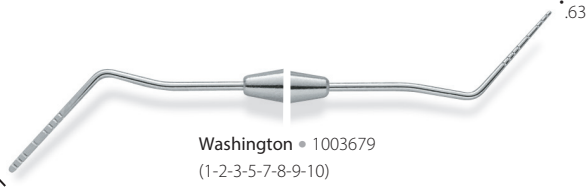
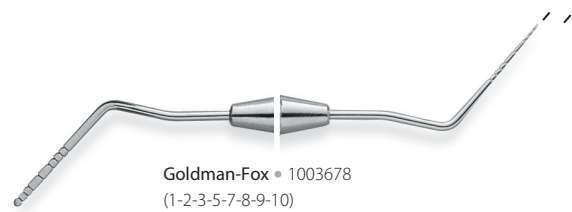
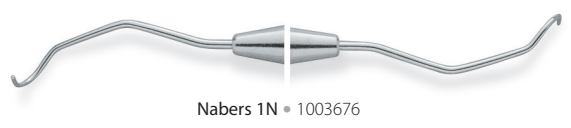
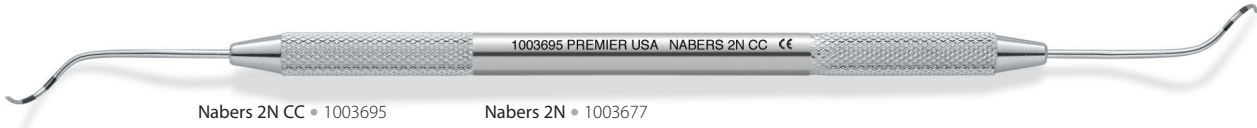
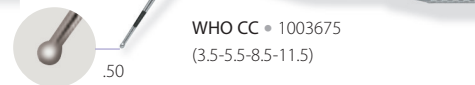
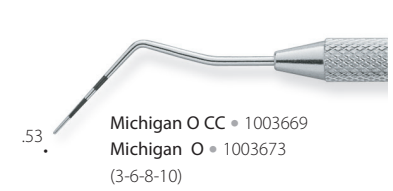
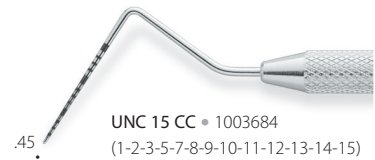
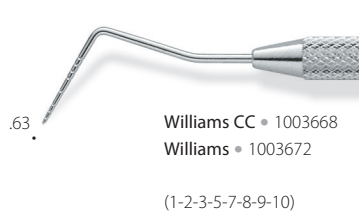
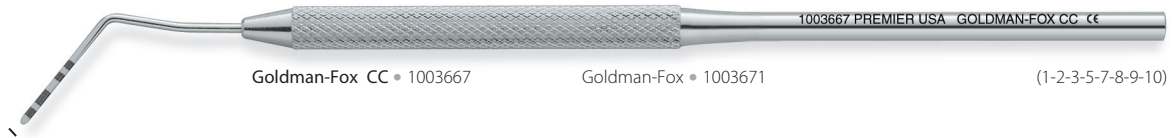
Gracey 13/14 • BEUL-05613 • PremierAir-1004666
Triple angulation for easy access to distal/posterior surfaces of premolars and molars



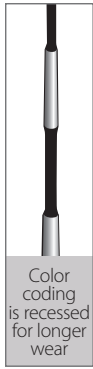
Gracey 15/16 • BEUL-05653
Angled shank, designed to reach mesial surfaces of posterior teeth



Gracey 17/18 • BEUL-05655
Highly angled shank for reaching distal surfaces of posterior teeth



Tip diameter measurements in millimeters. CC indicates color coding.



Clear-View™
long lasting, easy to read, color-coded, metal probes



Marquis 12 • 1004917 (3-6-9-12)

.45



.45 **UNC 12 • 1003687**
(1-2-3-5-7-8-9-10-11-12mm)



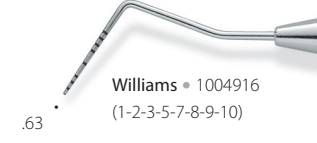
.45 **UNC 15 • 1003640**
(1-2-3-5-7-8-9-10-11-12-13-14-15mm)



.53 **Michigan O • 1004914**
(3-6-8)



Goldman-Fox • 1004918
(1-2-3-5-7-8-9-10)



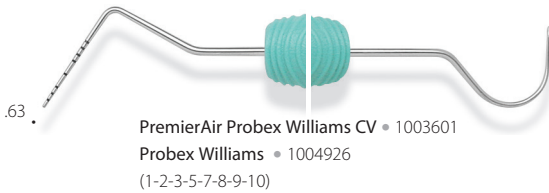
.63 **Williams • 1004916**
(1-2-3-5-7-8-9-10)



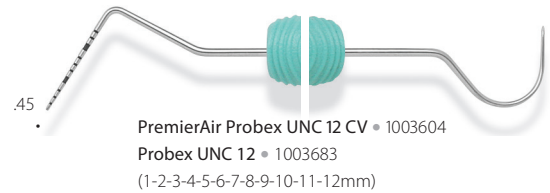
.45 **YO 9 • 1004910**
(3-6-9-12)



PremierAir Probex Marquis 12 CV • 1003600



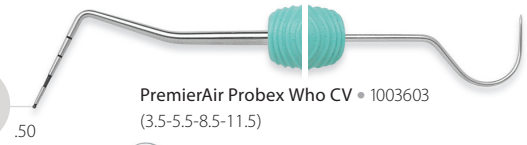
.63 **PremierAir Probex Williams CV • 1003601**
Probex Williams • 1004926
(1-2-3-5-7-8-9-10)



.45 **PremierAir Probex UNC 12 CV • 1003604**
Probex UNC 12 • 1003683
(1-2-3-4-5-6-7-8-9-10-11-12mm)



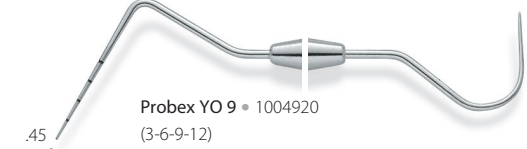
PremierAir Probex UNC 15 CV • 1003602



PremierAir Probex Who CV • 1003603
(3.5-5.5-8.5-11.5)



.53 **Probex CV • 1004924**
(3-6-8)



.45 **Probex YO 9 • 1004920**
(3-6-9-12)



CF 6 • 1003512

CF 6XT • 1003116

OCT 6 • 1003492



CF 6L • 1003513



CF 6L-H • 1003511



CF 17 • 1003514



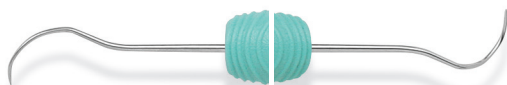
CF 23 • 1003515
CF 23 12-PK • 1003962
CF 23XT • 1003118
OCT 23 • 1003495

Cavity Finder™ Explorer

- Improved tactile sensitivity via multi-piece construction
- Thin, yet sharp and durable tips



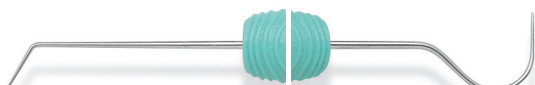
PremierAir CF 2 • 1003564 CF 2 • 1003522 CF 2XT • 1003119 OCT 2 • 1003502
CF 2 12-PK • 1003963



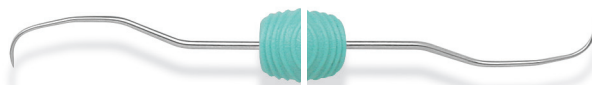
PremierAir CH3 • 1003563
CF 3CH • 1003527



PremierAir CF 5 • 1003560
CF 5 • 1003523 CF 5 12-PK • 1003964
CF 5XT • 1003120 OCT 5 • 1003503



PremierAir CF 6/23 • 1003565
CF 6/23 • 1003526 OCT 6/23 • 1003506



PremierAir OD 11/12 • 1003562
CF ODH 11/12 • 1003549



PremierAir TU 17/23 • 1003566
CF TU 17/23 • 1003509



CF 2CH • 1003528



CF 6 • 1003524

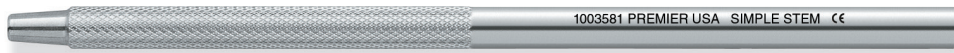


CF 11/12 • 1003529

Mirror Handles



Cone Socket • 1003582



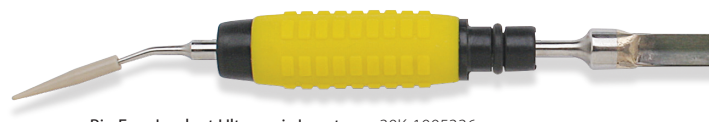
Simple Stem • 1003581

Big Easy® Ultrasonic Inserts Big Easy cushion-grip ultrasonic inserts for improved ergonomic grip and comfort.

- Ergonomically designed large 7/16" diameter for maximum comfort and decreased fatigue
- Compatible with most magnetostrictive handpieces



Big Easy Ultrasonic Inserts - #10 Universal • 25K-1005300 • 30K-1005310



Big Easy Implant Ultrasonic Inserts • 30K-1005336

- Permanently attached PEEK tip will not scratch implants
 - PEEK is considered an advanced biomaterial used in medical implants
 - PEEK is non-abrasive and proven robust for long-lasting insert tips
- Effectively removes biofilm and calculus



Big Easy Ultrasonic Inserts - #1000 Triple Bend • 25K-1005305 • 30K-1005315



Big Easy Ultrasonic Inserts - #100 Thin-tip • 25K-1005320 • 30K-1005330



Resin Handle Ultrasonic Insert - #10 Universal • 25K-1006800 • 30K-1006900



Resin Handle Ultrasonic Insert - #1000 Triple Bend • 25K-1006802 • 30K-1006901



Resin Handle Ultrasonic Insert - #100 Thin-tip • 25K-1006820 • 30K-1006920

Premier PerioWise® "The Friendly Probe"®

- ✓ Slightly flexible for greater patient comfort
- ✓ Clearly visible when using intra-oral camera



Original 3-5-7-10mm • 9006107 (3-pack) • 9006102 (6-pack) • 9006105 (12-pack)

"Most Highly Rated"*



3-6-9-12mm • 9006108 (3-pack) • 9006104 (6-pack) • 9006106 (12-pack)

* An independent non-profit dental education and product testing foundation - January 2001. / **. "A Patient-Centered Approach to Periodontal Disease Detection." JOURNAL OF PRACTICAL HYGIENE; Vol. 8, Number 3; May/June 1999.

Premier PerioWise® UNC12 "The Friendly Probe"®

- ✓ Provides precision measuring of pocket depths with markings indicating 1mm increments up to 12mm
- ✓ Ideal for complete periodontal examinations and intraoral measurements

1mm increments up to 12mm



UNC 12 • 9006120 (3-pack) • 9006121 (6-pack) • 9006122 (12-pack)

Implant Scalers

- ✓ Thin, slightly flexible and safe for use on implants
- ✓ Autoclavable (273°F/134°C)



Universal (Columbia 4L/4R)

2 pack • 9061401
5 pack • 9061400



Facial (Goldman-Fox 5)

2 pack • 9061402
5 pack • 9061403



137 Anterior

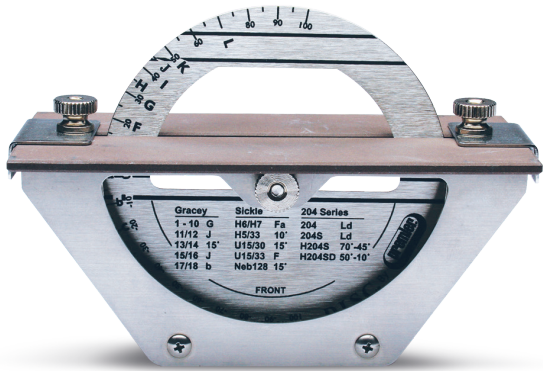
2 pack • 9061421
5 pack • 9061420



204 Posterior

2 pack • 9061423
5 pack • 9061422

The Cutting Edge in Precision Sharpening



Autoclavable D.I.S.C.™ Instrument Sharpening System

- ✓ Simplifies sharpening
- ✓ Easy-to-use
- ✓ Quick and accurate
- ✓ No damage to cutting surface



9048200 Autoclavable D.I.S.C. complete with (2) sharpening stones and Comprehensive Guide to Sharpening

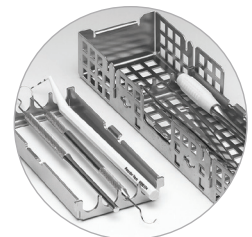
9048093 Sharpening Stone (1)

To view the D.I.S.C. tutorial, go to premierdentalco.com



Instrument Cassettes Stainless Steel

- ✓ Proven reliability & quality performance
- ✓ Unique, hingeless design
- ✓ Compact, double-stack feature



9010904 Mark I (4 or 8 instruments)

9010908 Mark VI (8 or 16 instruments)

9010924 Mark IV (12 or 24 instruments)

9010901 Accessory Cassette

BioGREEN™ Micro-Applicators

Bendable. Economical. Eco-Friendly.

Take a positive step for the environment today with Premier's new BioGREEN™ micro-applicators. They are the smart, environmentally friendly alternative to traditional plastic micro-applicators. Made from a food production straw-byproduct, BioGREEN micro-applicators are biodegradable and compostable. Because they are made from renewable and sustainable materials, you can feel good knowing they help to reduce CO2 through the plants used to make them. So go ahead and make a positive difference with BioGREEN micro-applicators and get the job done for all your micro-application needs.

- ✓ Available in regular, fine and super-fine sizes
- ✓ Eco-Friendly 4 Ways!
 - Biodegradable & compostable
 - Recyclable packaging made from sustainable materials
 - Requires less energy to produce vs. petroleum plastics
 - Source plants reduce CO2 (greenhouse gasses) through photosynthesis
- ✓ Gluten-free & Lint-free brush tips

3005100 Regular (green)
 3005101 Fine (blue)
 3005102 Super-Fine (yellow)
 Contents 100 micro-applicators



Vac Attak™ GREEN

Safe, Effective and EPA-Compliant Evacuation System Cleaner

Vac Attak™ GREEN is a high-performance evacuation system cleaner designed to comply with the EPA's 2020 Clean Water Act. Using a combination of powerful enzymes with powerful surfactant chemistry that gets the job done, Vac Attak GREEN's environmentally-friendly formula meets the ADA's best management practices.

With a neutral pH, its non-foaming and non-corrosive formula has no chlorine or oxidizing agents.

Safe and gentle for every day use with all amalgam separators, this evacuation system cleaner is still Vac Attak-tough to clean your lines of bio-burden, prophy paste and fluoride gels.

- ✓ Powerful enzymatic, EPA-compliant cleaner
- ✓ Compatible with amalgam separators
 - pH neutral
 - No chlorine
 - No oxidizing agents
 - Non-foaming
 - Non-corrosive
- ✓ Up to 80 cleanings per jar
- ✓ Economical and easy-to-use powder
- ✓ Fresh citrus scent

9011105 Six, 800g jars with scoop dispenser

Individual jars available through dealer.



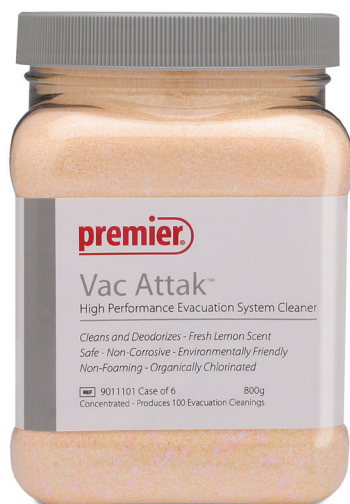
Brite Shield™

Instrument Cleaner and Protectant

- ✓ Environmentally-friendly powerful enzymatic formula
- ✓ Static soak and ultrasonic cleaner
- ✓ Removes glass ionomer, carboxylate, zinc phosphate cements and bio-burden
- ✓ Unique passivation process coats instruments restricting rust and corrosion
- ✓ Removes alginate and stone from impression trays
- ✓ Economical and easy to use. One jar makes up to 34 gallons

9011100 Six, 800g jars with scoop dispenser

Individual jars available through dealer.



Vac Attak™

Evacuation System Cleaner

- ✓ Especially effective on prophy paste and fluoride gels
- ✓ Fast-acting
- ✓ Environmentally friendly
- ✓ Economical and easy to use
- ✓ Up to 100 cleanings per 800g jar

9011101 Six, 800g jars with scoop dispenser

Individual jars available through dealer.

Pro Clean™

Professional Strength Tartar and Stain Remover
for Dentures, Partials, Retainers and Night Guards

- ✓ Extremely effective cleaner
- ✓ Environmentally friendly
- ✓ Easy to mix and use during patient's prophylaxis or dispense for patient home use



9011103 Box of 25 packets
9011102 Case of 10 boxes - (25 packets/box)

Sleeve-It™

Disposable Barrier Sleeves
Help Prevent Cross-Contamination

Premier's Sleeve-It™ disposable barrier sleeves provide proven protection against cross-contamination. Made from high-grade durable material, Sleeve-It barriers have passed extensive testing²⁹ to ensure patient safety.

Easy to use, Sleeve-It barriers slide over syringe and cartridge dispensers and feature a pre-cut opening to pass through the dispensing tip.

Ideal for multiple-use dispensers that cannot be reprocessed using heat-sterilized or high-level disinfectants, Sleeve-It barriers can be conveniently used for each new patient per FDA, CDC and OSHA recommendations³⁰.

- ✓ Proven barrier protection for multiple-use dispensers
- ✓ Protection against cross-contamination.
- ✓ Passed extensive testing²⁹ to ensure patient safety.
- ✓ Easy to use

9011501 100 Series - Fits 0.7 - 3.0ml syringe
Contains: 300 disposable barrier sleeves
9011503 200 Series - Fits 5ml dual-barrel syringe
Contains: 300 disposable barrier sleeves

Perfect for
BioCoat®!
See page 3.



100 SERIES 9011501 100 series
(Fits 0.7 -3.0ml syringe)



200 SERIES 9011503 200 series
(Fits 5ml dual-barrel syringe)

29. Viral penetration: ASTM F 1671 Synthetic blood penetration: ASTM F 1670 Resistance to puncture: ASTM F 1342. Tear resistance: ASTM D 1004. Tensile testing: ASTM D 882. Biocompatibility: ISO 10993-5, ISO 10993-10, ISO 10993-12. / 30. <https://www.fda.gov/medicaldevices/productsandmedicalprocedures/dentalproducts>



Topicale® Topical Anesthetic Gel Pump

- ✓ Easy dispensing; minimizes waste
- ✓ 10-second onset
- ✓ 18% Benzocaine

9007162 Raspberry - 43g / 1.5oz pump

Not available in Canada.



Topicale® Xtra Oral Anesthetic Gel

- ✓ Three fun flavors, with no bitter after-taste
- ✓ 20% Benzocaine formulation for rapid 10-second onset of surface anesthesia of soft tissue
- ✓ Economical 1oz jar (28.35g)

9007152 Very Berry Cherry

Not available in Canada.



Prior to Injection



Oral Ulcers/Irritations

Topicale® GelPatch™

Once placed in the mouth, Topicale GelPatch dissolves gradually - releasing benzocaine to anesthetize surface tissue for up to 20 minutes. Ideal for denture sores, prior to injection and oral ulcer/irritations - appropriate for patient home use. Fast acting

- ✓ Self-dissolving
- ✓ Flexible

9007149 GelPatch - (25) Mint

Not available in Canada.



Topicale and Topicale Xtra are Gluten-free. Not available in Canada.









premierdentalco.com/promise

We'll go the extra mile, every time.

We promise to:

-  Make it easy to do business with us
-  Provide innovative, standard-setting solutions
-  Be your Product Concierge – for knowledge and service
-  Make it right if we fall short

premier® Inspired solutions
for daily dentistry®

Premier® Dental Products Company • 1710 Romano Drive, Plymouth Meeting, PA 19462, USA
Phone 888-670-6100 • 610-239-6000 • Fax 610-239-6171 • premierdentalco.com • E-mail: info@premierdentalco.com